

COMPANY INTRODUCTION

PLEASURE TO CUSTOMERS, BLISS TO EMPLOYEES!



AGRICULTURAL MACHINERY
ATTACHMENT

EXCAVATOR
LEVER
PEDAL
MIRROR STAY
ALL KINDS OF BRACKETS

LEVER
FOLKLIFT LEVER
PEDAL
ALL KINDS OF BRACKETS

FACILITY
CNC GAS CUTTING
BENDER
CUTTING MACHINE
SHORTER
MILLING

LATHE
RADIAL
BAND/SAW
CO2 WELDER
PAINT LINE (PAINT, DRIER)

CONTENTS.

01. EMERGENCY INSTRUCTIONS

02. SAFETY RULES

03. VISION

04. ABOUT US HISTORY | OVERVIEW | ORGANIZATION | SALES | QUALITY DP TOTAL | MAIN CUSTOMER

05. BUSINESS AREA BUSINESS AREA | MAIN PRODUCT

06. MANUFACTURING PROCESS

07. EQUIPMENT STATUS MATERIAL FLOW | EQUIPMENT STATUS | CERTIFICATES

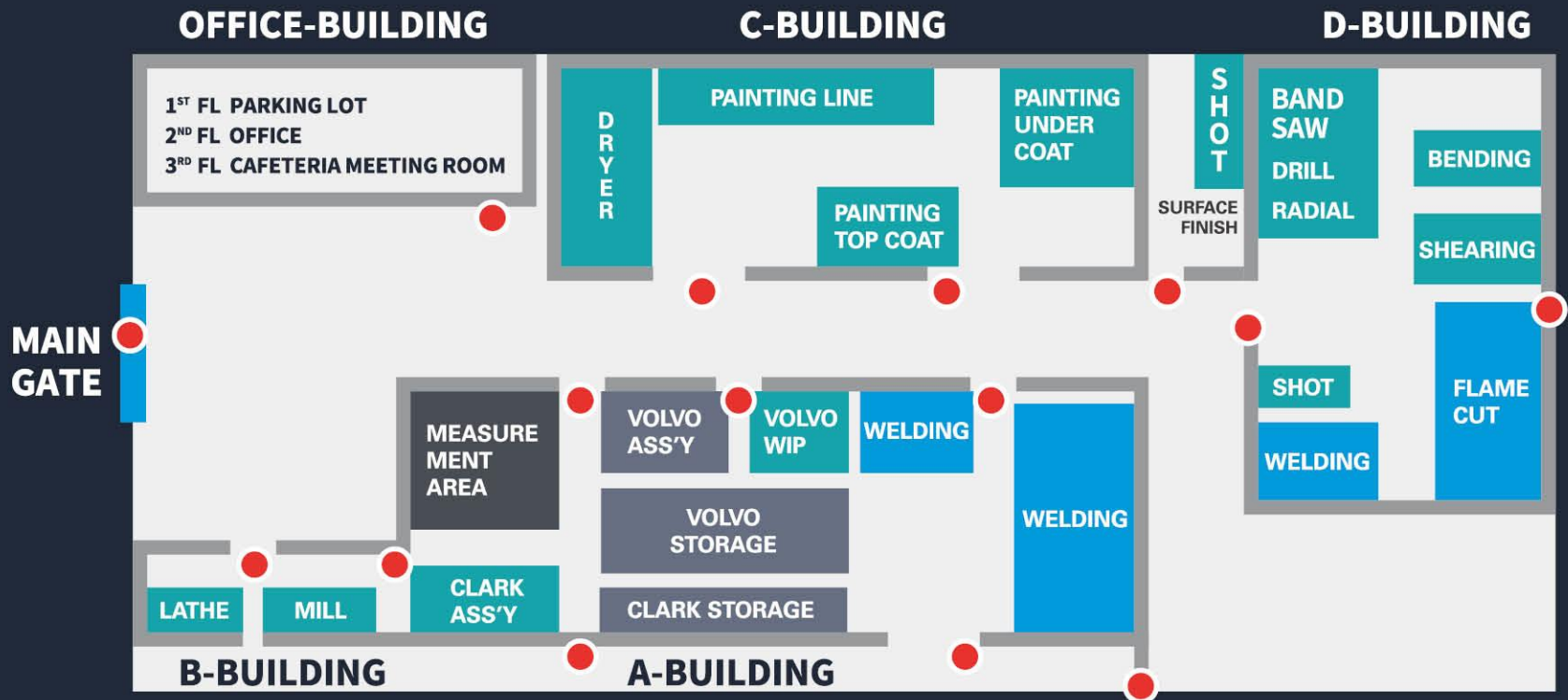
01.

EMERGENCY INSTRUCTIONS



CHEONG-SA PRECISION CO.,LTD

In an emergency, escape using an emergency exit which is marked with a red dot. If the emergency exit of the first floor entrance using the stairway of the office building is not available, use a emergency machine which is installed in the back of the kitchen of a restaurant on the third floor.



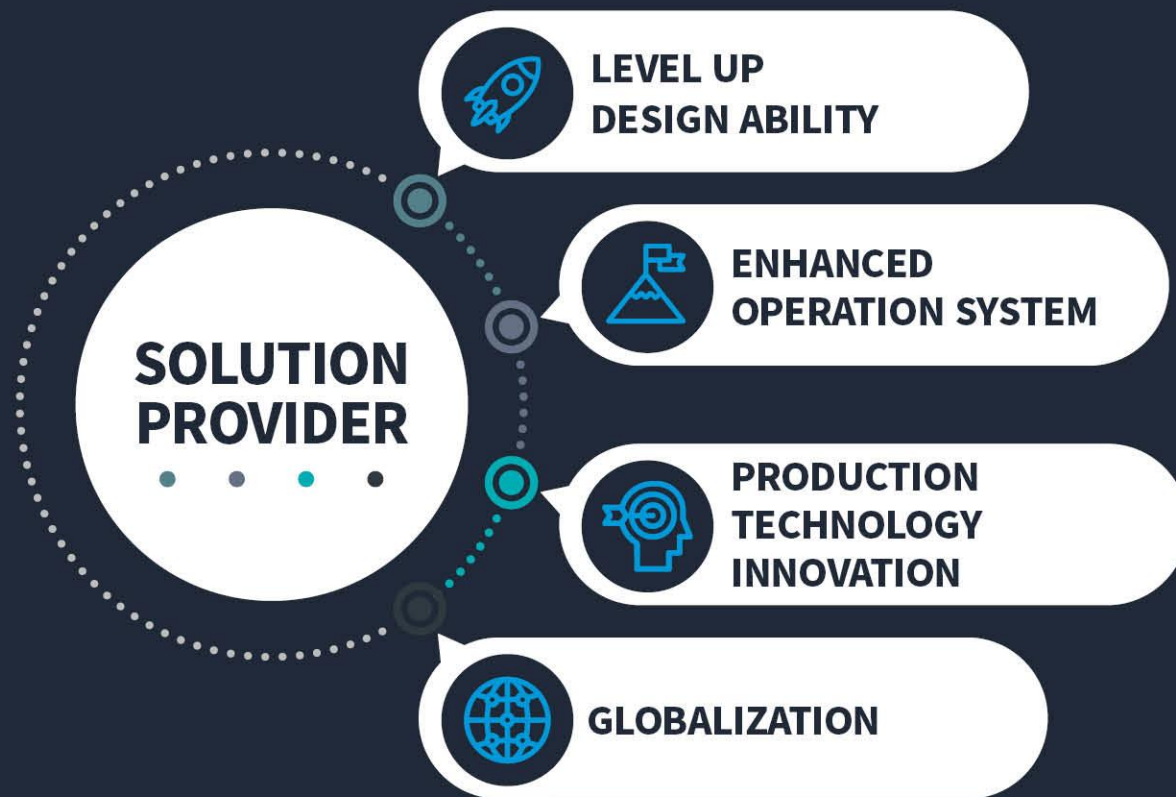
02. | SAFETY RULES



- Wearing safety helmets and safety shoes is essential in the workplace.
- To closely observe welding, machining, flame cutting, and thought processes, you must wear safety glasses.
- You should not operate the equipment without authorization or approval.
- If you need to stay in the Shot Blast process for a long time, wear earplugs.
- Use safety passage in the factory.
- If the operator is driving the equipment, do not talk to him.
- Smoking is only allowed in designated places.
- If you have any questions regarding safety during your visit, please contact the guide.

Great Workplace To Work!

world best welding products manufacturer



04. | About Us OVERVIEW



(주)청사정공
CHEONG-SA PRECISION CO.,LTD

CEO. Taekwang Woo

Established date. June 1st 1987

Plottage. 5,004m² (1,514pyeong)

Floor space. 2,717m² (822 pyeong)

Number of employees. 36persons

T. +82-55-253-3818 **F.** +82-55-253-3816

E. 3818@cheongsa.co.kr

11, Bongganggasul-ro 537 beon-gil, Daesan-myeon, Uichang-gu,
Changwon city, Gyeongnam province, Korea (Zip Code 51124)



04.

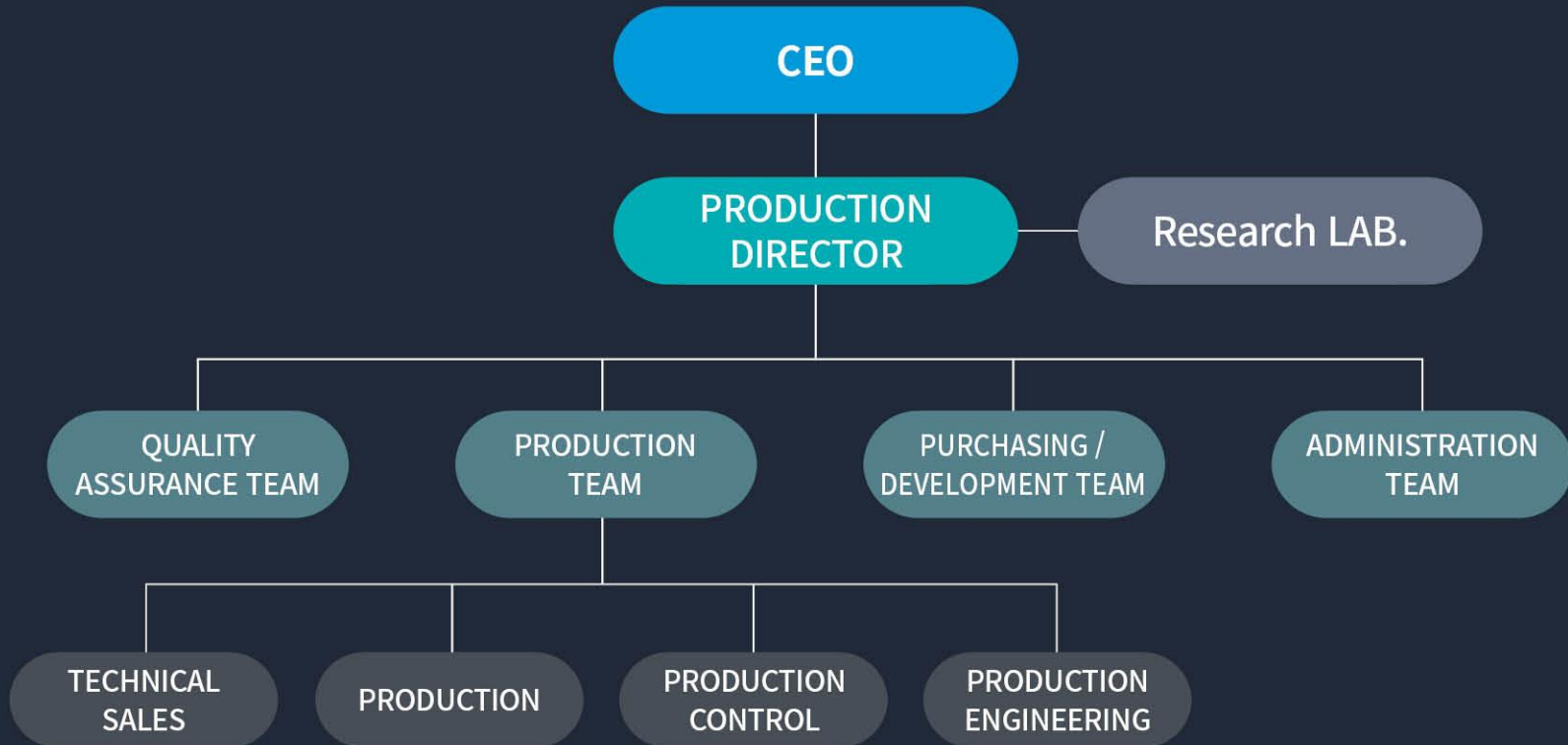
About Us HISTORY

A horizontal timeline graphic consisting of four parallel green lines with blue circular markers at the start of each line. The markers are connected to text boxes containing dates and descriptions of company milestones.

		2023. Feb Introducing MES Systems	2022. NOV Certified ISO45001 Occupational Health and Safety Management System
2013. JUL Set up Research Laboratory	2010. NOV Qualified as Venture company	2010. OCT Chaired T.K WOO as CEO	2002. OCT Certified Clean Workplace from Ministry of Labor
2002. OCT Certified ISO 14001 Environmental Management System	2000. DEC Certified ISO9001 Quality Management System	2000. JUN Changed company Name as cheongsam Precision Co.,Ltd	1998. NOV Build up new plant and Moved to Current site
1998. AUG Registered as Qualified Supplier from CMHA Forklift	1998. JUN Registered as Qualified Supplier from VOLVO Excavator	1995. MAY Localized Hose reel Ass'y of SHI Hydraulic Crane(25T,50T)	1987. JUN Established Cheongsa Precision LLC

PLEASURE TO CUSTOMERS, BLISS TO EMPLOYEES!

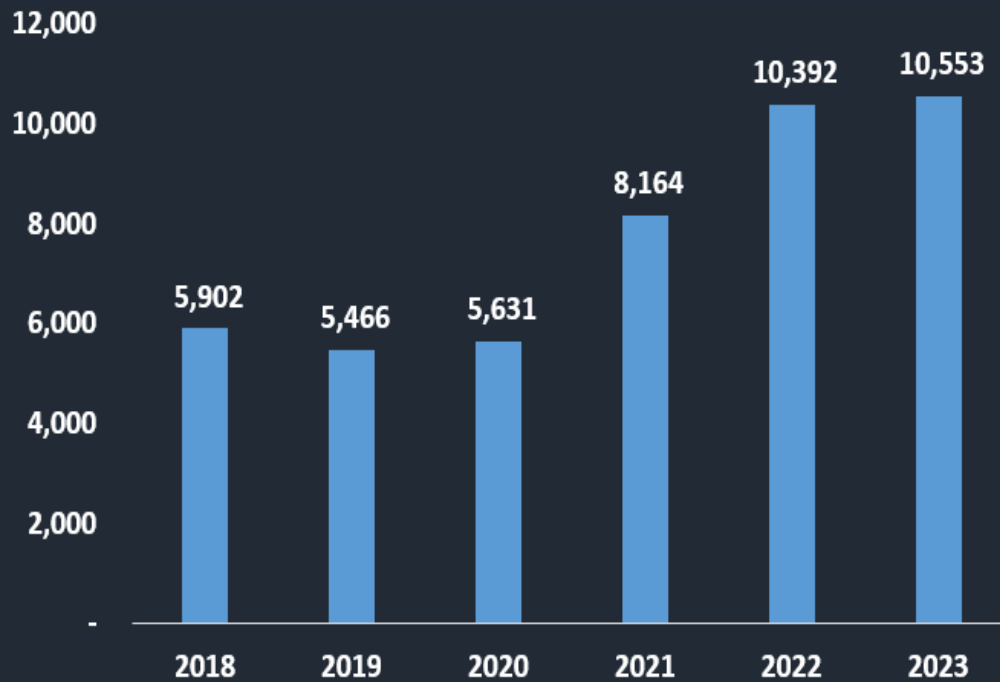
04. | About Us ORGANIZATION



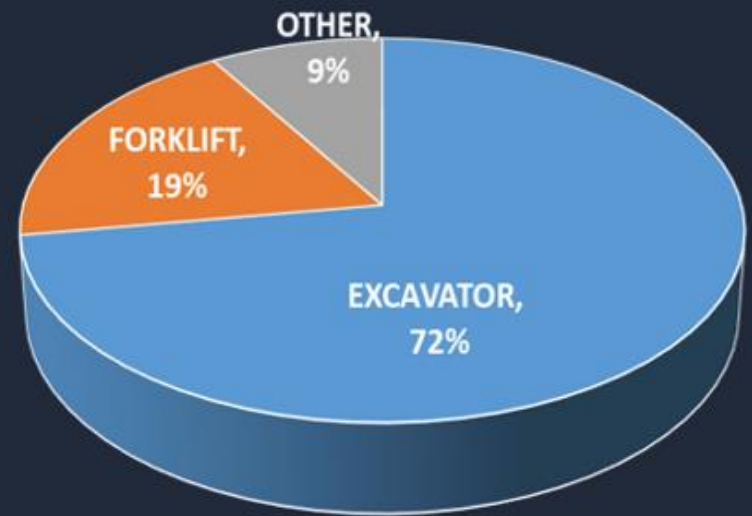
Total Employees 36 persons
office worker : 10 / production worker : 26

04. | About Us SALES

SALES BY YEAR (Million WON)



SALES RATIO BY BIZ. AREA

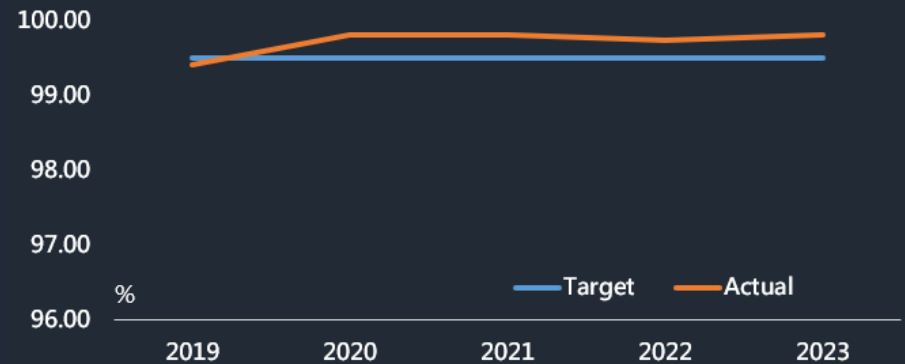


04. | About Us QUALITY DP TOTAL

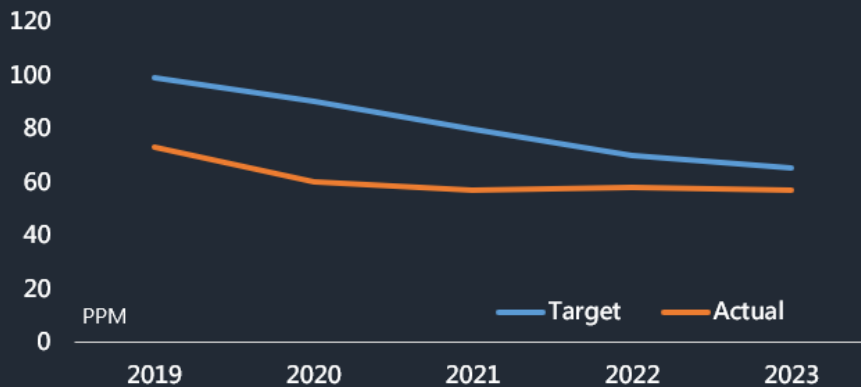


Years DP Target vs Actual

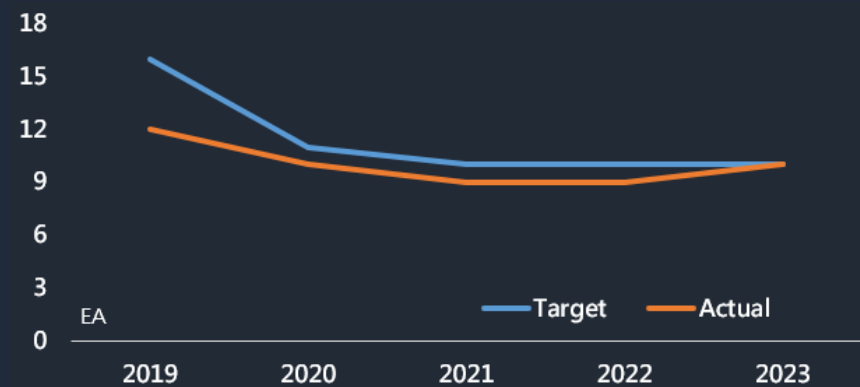
Month	2019	2020	2021	2022	2023
Target	99.50	99.50	99.50	99.50	99.50
Actual	99.40	99.80	99.80	99.74	99.81



Years Quality Target vs Actual



Years Quality Target vs Actual



PLEASURE TO CUSTOMERS, BLISS TO EMPLOYEES!

04. | About Us MAIN CUSTOMER



05.

Business Area **BUSINESS AREA**



EXCAVATOR
LEVER
PEDAL
MIRROR



FORKLIFT
LEVER
PEDAL
BRACKET



**EXCAVATOR
FORKLIFT**
농기계



05.

Business Area MAIN PRODUCT



EXCAVATOR : 350items



CAMERA BRACKET



ON OFF PEDAL



STOP DEVICE_ASSY
PEDAL



CONTROL LEVER_ASSY
TRACK CONTROL



STAY MIRROR WA



STEP WA FOR 700M



PLATE WA
MCV.MTG



MCV BRACKET WA



BRACKET WA



BRACKET WA MUFFLER



BRACKET WA
OIL BATH



BRACKET WA
OPT



SUPPORT WA

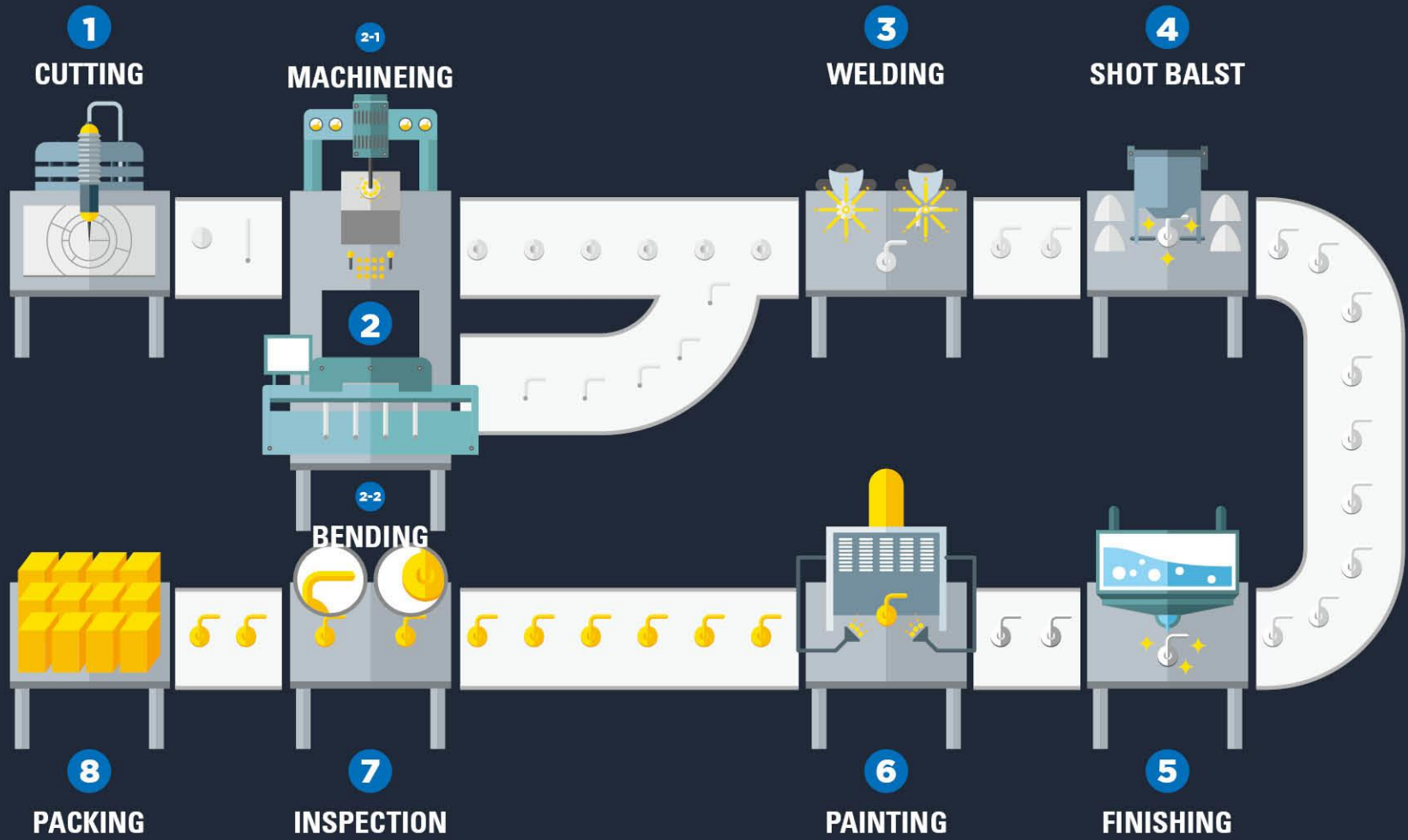


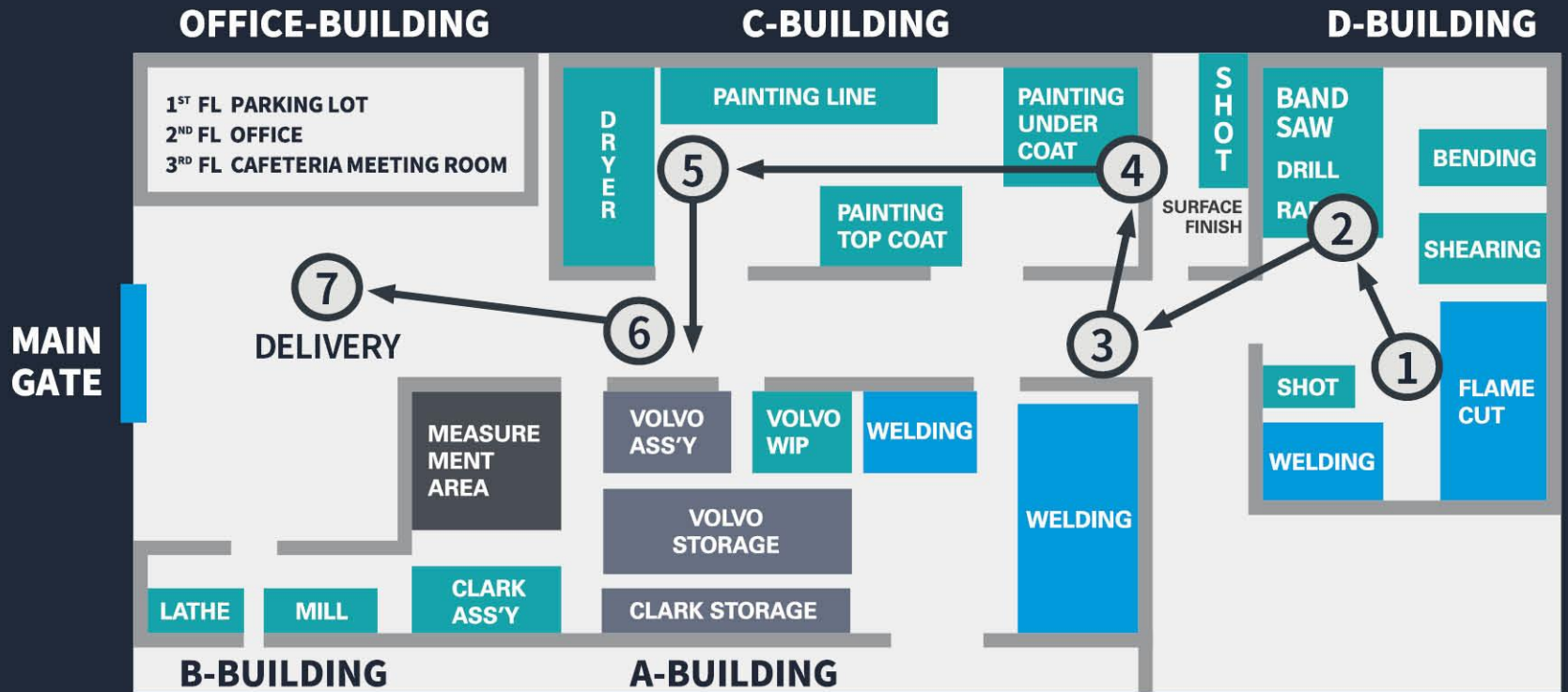
RING GEAR COVER



GUARD_ASSY FAN

06. | MANUFACTURING PROCESS





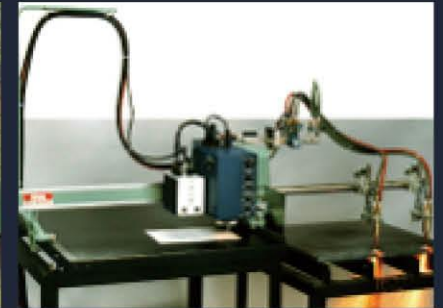
07.

Equipment Status

EQUIPMENT STATUS



FACILITY	MAKER	Q'TY
CNC Flame Cut	KOENTEK	2
BENDING M/C	DONGJIN IND.	2
SHEARING M/C	DONGJIN IND.	1
SHOT BLAST M/C		3
MILL	DOOSAN M/C	4
LATHE	WHACHEON M/C	3
RADIAL DRILL	DOOSAN M/C	3
BAND/SAW	KYEONGDONG M/C	1
CO2 WELDER	Panasonic	20
PAINTING(W/ DRYER)		2 line



07. | Equipment Status

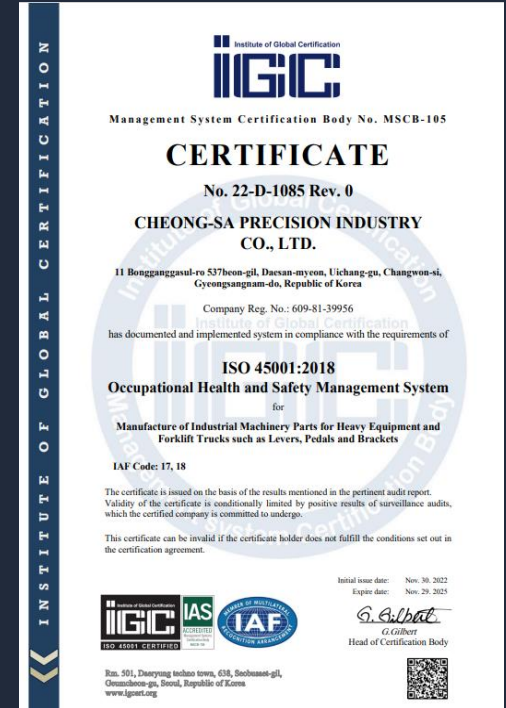
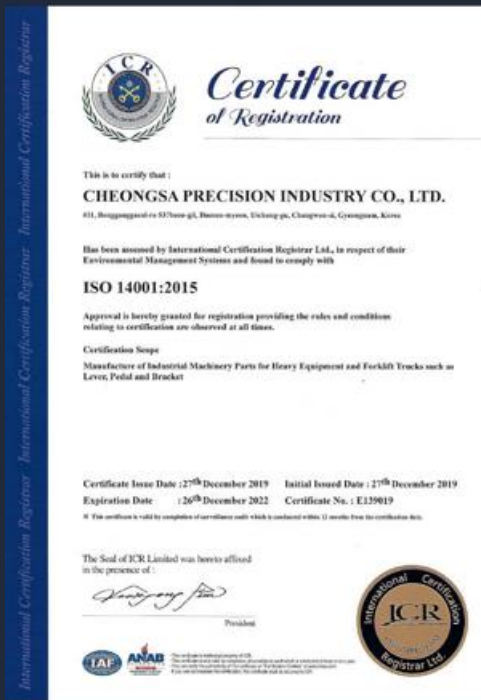
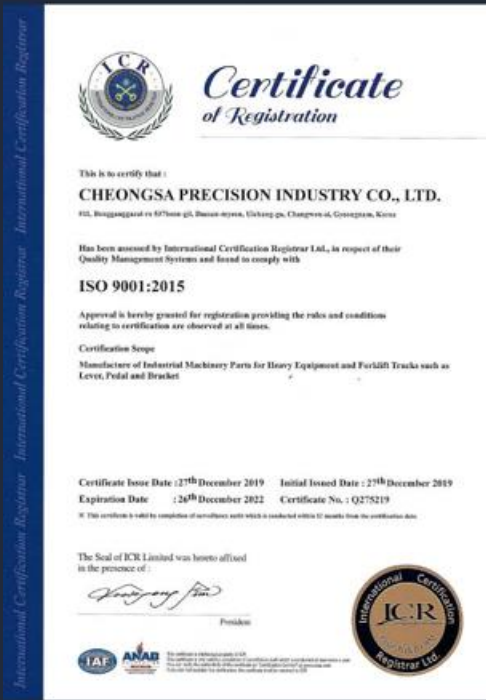
CERTIFICATES



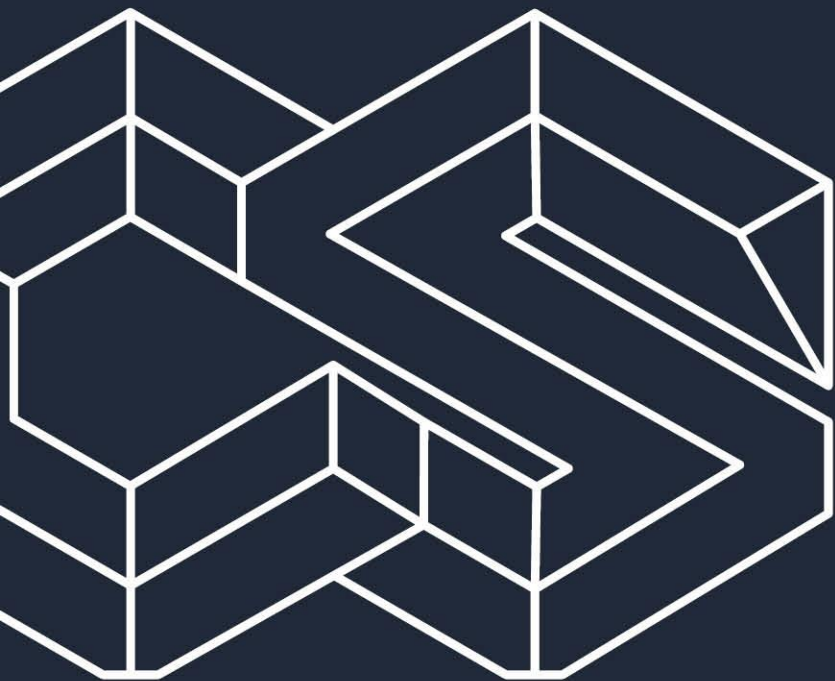
**ISO 9001:2015
(QUALITY MANAGEMENT SYSTEM) : ICR**

**ISO14001:2015 (ENVIRONMENTAL
MANAGEMENT SYSTEM) : ICR**

**ISO45001:2018 Health and Safety
Management System**



PLEASURE TO CUSTOMERS, BLISS TO EMPLOYEES!



**THANK
YOU!**



CHEONG-SA PRECISION CO.,LTD